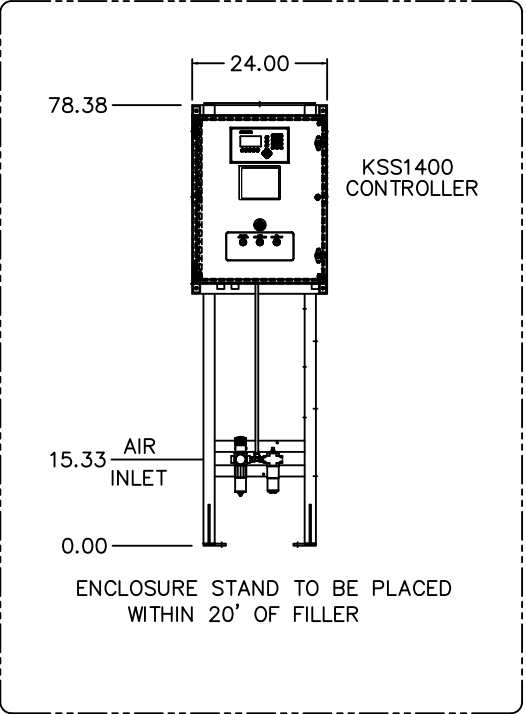
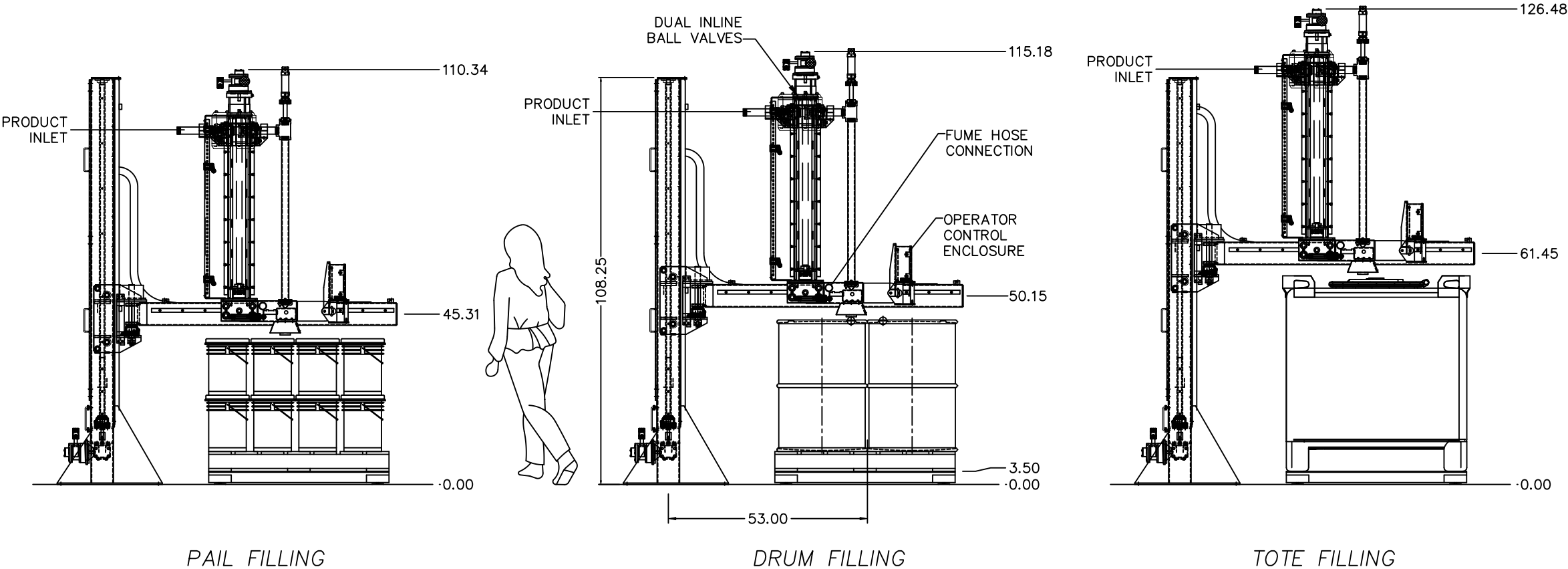


REV	DESCRIPTION	DATE
-	ORIGINAL	01/06/20



### INSTALLATION NOTES:

- ENGINEERING RECOMMENDS 4" THICK MINIMUM CONCRETE UNDER FILLING SYSTEM AND CONVEYOR SECTIONS
- THE CONCRETE IS TO HAVE A MINIMUM YIELD STRENGTH OF 3,000 PSI
- NEWLY FORMED CONCRETE MUST BE FULLY CURED PER SUPPLIER'S RECOMMENDATIONS
- VERIFY EXISTING SURFACES ARE FREE OF CRACKS AND DEFORMITIES
- SURFACES DIRECTLY UNDER THE FILLING SYSTEM ARE TO BE LEVEL WITHIN 1/16" PER FOOT. THIS IS CRITICAL FOR SAFE AND PRECISE OPERATION OF THE UNIT
- SURFACES DIRECTLY UNDER THE CONVEYOR SYSTEM ARE TO BE LEVEL WITHIN 1/4" PER FOOT AND NOT MORE THAN 3" TOTAL VARIANCE IN THE SYSTEM AREA
- 1/2" DIAMETER ANCHOR BOLTS WITH 3" MINIMUM EMBEDMENT ARE TO USED TO INSTALL EQUIPMENT

### GENERAL NOTES:

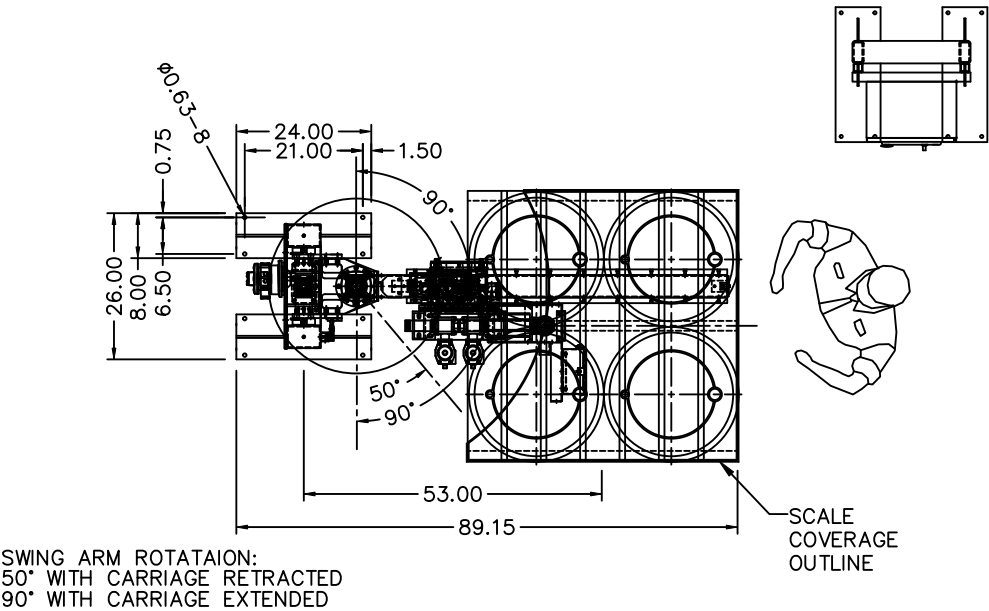
#### 4S55/TOTE FILLING SYSTEM:

- MATERIALS OF CONSTRUCTION:
  - STRUCTURALS – 304SS
  - WETTED PARTS – 316SS
  - SEATS AND SEALS – TEFLON
  - ENCLOSURES – 304SS

### DESIGN NOTES:

#### 4S55/TOTE FILLING SYSTEM:

- PRODUCT INLET – 1-1/2" NPT (OPTION)
- SYSTEM AIR INLET – 1/2" NPT THREADED
- FUME HOSE CONNECTION – 1.90" O.D. PIPE STUB
- PURGE INLET (OPTIONAL) – 1/4" TUBE CONNECTION



CUSTOMER:		NO.	QTY	DESCRIPTION or MATERIAL AND SIZE		PART NUMBER	TOTAL UNITS
STANDARD MODEL 4S-55T							
PROJECT NUMBER:		JOB NUMBER					
KSS accessories for hazardous areas are designed with guidelines set forth by the National Fire Protection Association. Approval for use in a specific environment can be given by the user's own insurance company. KSS assumes no liability with regard to installation, operation, or maintenance at the user's facility. The owner assumes total responsibility and liability for submission and approval by his insurance company. This document is loaned for limited purposes only, and remains the property of the Company. It is to be returned upon request and in all events upon completion of the purposes of the loan.				<div> <div> </div> <div> <b>KANAWHA SCALES &amp; SYSTEMS</b>            443 INDUSTRIAL BLVD. PARKERSBURG, WV            PH: 304.464.5300 FX: 304.464.5312         </div> </div>			
				MODEL 4S-55T OVERVIEW			
SHEET: 1		DRAWN BY CLD		SCALE 25		DRAWING No.	
OF: 1		DESIGNED BY JB		DATE 01/06/20		4S-55T	