

PROJECT NOTES:

4S-55/T SYSTEM:

1. MATERIALS OF CONSTRUCTION:
 - A. STRUCTURALS - 304SS (POWDER COAT OPTIONAL)
 - B. WETTED PARTS - 316SS
 - C. SEATS AND SEALS - TEFLON
 - D. ENCLOSURES - 304SS

CONVEYOR:

1. MATERIALS OF CONSTRUCTION:
 - A. STRUCTURALS - PAINTED CS
 - B. ROLLERS 2.50 x 11 GA SS - GREASE SEALED BEARINGS

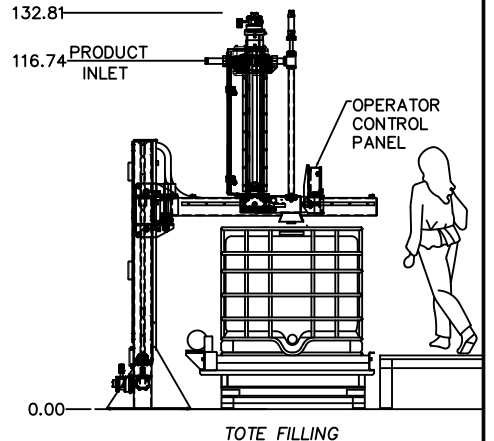
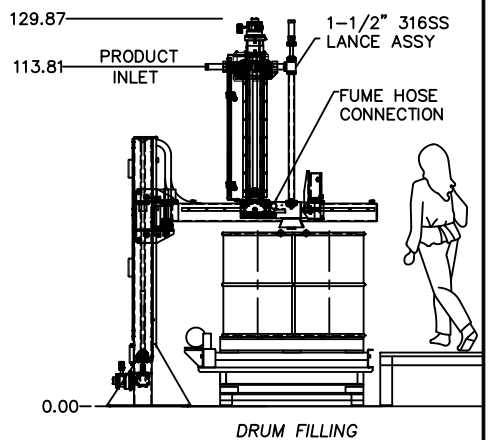
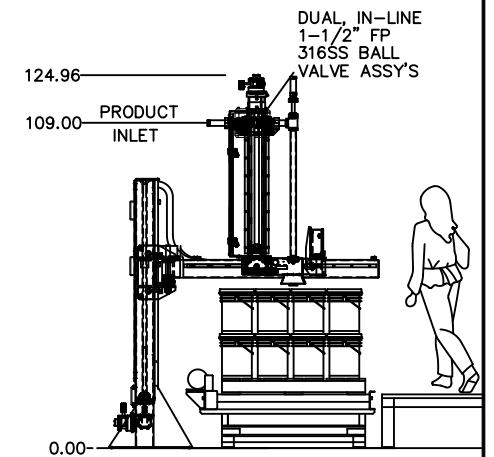
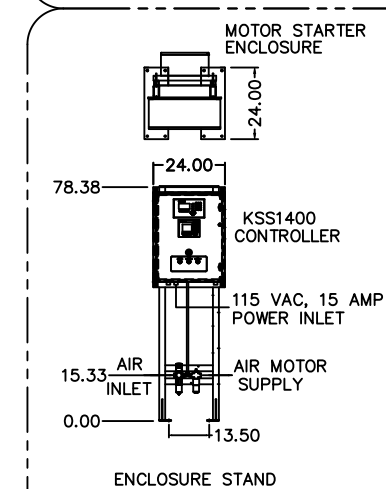
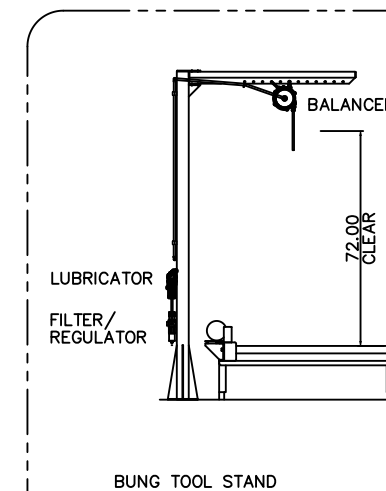
DESIGN NOTES:

4S55/TOTE FILLING SYSTEM:

1. PRODUCT INLET - 1-1/2" NPT THREADED
2. SYSTEM AIR INLET - 1/2" NPT THREADED
3. FUME HOSE CONNECTION - 1.90" O.D. PIPE STUB
4. PURGE INLET (OPTIONAL) - 1/4" TUBE CONNECTION

INSTALLATION NOTES:

1. ENGINEERING RECOMMENDS 4" THICK MINIMUM CONCRETE UNDER FILLING SYSTEM AND CONVEYOR SECTIONS
2. THE CONCRETE IS TO HAVE A MINIMUM YIELD STRENGTH OF 3,000 PSI
3. NEWLY FORMED CONCRETE MUST BE FULLY CURED PER SUPPLIER'S RECOMMENDATIONS
4. VERIFY EXISTING SURFACES ARE FREE OF CRACKS AND DEFORMITIES
5. SURFACES DIRECTLY UNDER THE FILLING SYSTEM ARE TO BE LEVEL WITHIN 1/16" PER FOOT. THIS IS CRITICAL FOR SAFE AND PRECISE OPERATION OF THE UNIT
6. SURFACES DIRECTLY UNDER THE CONVEYOR SYSTEM ARE TO BE LEVEL WITHIN 1/4" PER FOOT AND NOT MORE THAN 3" TOTAL VARIANCE IN THE SYSTEM AREA
7. 1/2" DIAMETER ANCHOR BOLTS WITH 3" MINIMUM EMBEDMENT ARE TO BE USED TO INSTALL EQUIPMENT



| | | | | | | | | | |
|---------------------------------------|--|------------------|--|----------------------------------|--|--------------------------------------|--|-----------------------------------|--|
| CUSTOMER: | | NO. QTY | | DESCRIPTION OF MATERIAL AND SIZE | | PART NUMBER | | TOTAL UNITS | |
| PROJECT NUMBER: | | JOB NUMBER | | KANAWHA SCALES & SYSTEMS | | 443 INDUSTRIAL BLVD. PARKERSBURG, WV | | PH: 304.464.5300 FX: 304.464.5312 | |
| MODEL D4S-55T FILLING SYSTEM OVERVIEW | | SHEET: 1 | | DRAWN BY: CLD | | SCALE: 25 | | DRAWING No. JB012021 | |
| OF: 1 | | DESIGNED BY: JIB | | DATE: 01/11/21 | | | | | |

KSS accessories for hazardous areas are designed with guidelines set forth by the National Fire Protection Association. Approval for use in a specific environment can be given by the user's own insurance company. KSS assumes no liability with regard to installation, operation, or maintenance at the user's facility. The owner assumes total responsibility and liability for submission and approval by his insurance company. This document is loaned for limited purposes only, and remains the property of the Company. It is to be returned upon request and in all events upon completion of the purposes of the loan.