

www.kanawhascales.com

**SERVICE LIKE NO OTHER**  
*We Provide More Than Equipment — We Provide Solutions.*

**Kanawha**  
Scales & Systems

## PLASTICS & CHEMICAL Processing

*For over 55 years, Kanawha Scales & Systems (KSS) has built its reputation around the highest level of customer support, innovative technology, and dedicated account management required by customers around the world.*

### 24/7 AVAILABILITY

KSS has always provided repair and maintenance service, available 24 hours a day, 7 days a week. In addition, technical phone support is provided any time you call, every time you call.

### NATIONWIDE SERVICE

Through a network of more than 200 dedicated service partners, KSS provides service in all 50 states. All of our service partners are held to the same high standards of quality that we set for ourselves.

### TRAINING

All of our service technicians are factory trained and are state registered where applicable. They are also required to participate in the KSS Service Technician Training Program. This program was designed and developed to ensure that our technicians are knowledgeable in all aspects of the weighing

### TRAINING (continued)

industry. In addition, our safety program includes components such as confined space and classified area training applicable to the chemical and plastics industry.

### CALIBRATION AND REPAIR

KSS provides standard repairs, emergency repair service, and regularly scheduled maintenance contracts. All calibrations are performed to NIST Handbook 44 standards to ensure that your scales are performing accurately.

### DATA MANAGEMENT AND REPORTING

**WebView Plus** online reporting provides web access to all of your scale information, repair histories, and calibration certificates. Download custom reports, determine budgetary needs, and even place service calls online.



www.kanawhascales.com

# SERVICE LIKE NO OTHER

*We Provide More Than Equipment — We Provide Solutions.*



## PLASTICS & CHEMICAL Processing



### Truck and Rail Scales

Measure incoming materials and outgoing product with equipment from a broad range of truck and rail scales. Our rugged truck and rail scales assure accurate cost and revenue control.



### Floor Scales and Indicators

From rugged floor scales to advanced programmable indicators, KSS offers everything to meet the varied needs of our customers.



### Bin, Tank, & Hopper Scales

We offer custom solutions to meet your needs. From bin designs to meet your specific application, a broad range of loadcells, and specialty gates and valves, KSS can provide it all. We also offer conversions to your existing hopper systems.



### Laboratory High Precision Balances

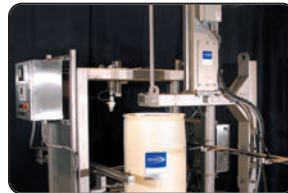
When accuracy matters, we provide the equipment to do the job. From high precision laboratory balances to portable electronic balances, KSS offers the best in high performance equipment.

*“As a total solutions provider, Kanawha Scales & Systems has an unbeatable combination of experience, knowledge, and commitment to success.”*



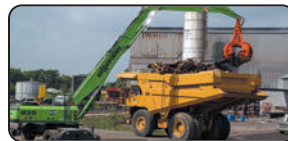
### Custom Solutions

KSS can customize a system to fit your requirements and your budget. From data collection and PLC control systems to truck and train loadouts, the experience and expertise provided by our team at Kanawha Scales & Systems is unsurpassed. We provide the sales, service, and support to meet your needs.



### Drumfilling, Bagging and Batching Systems

Our broad expertise in your industry enables us to provide the highest quality systems and products to meet the needs of you and your clients. Whether general purpose or classified areas, we provide the solutions for you.



### On-Board Weighing

KSS on-board weighing technology gives you the ability to mix commodities going into the charge bucket while in the scrap yard. Wireless communication with the loader shows how much of each “ingredient” is going into the bucket or onto the truck. The information is then stored in a database where it can be referenced for future batches or mixes. Our system of wireless technology and communication allows for increased accuracy and efficiency in the yard.



Rear Load Pin and Beam Load Cells enable on-board weighing.

Corporate Headquarters: Rock Branch Industrial Park • 111 Jacobson Dr., Poca, WV 25159 • 800.955.8321 • [kanawhascales.com](http://kanawhascales.com)

#### KSS BRANCH OFFICES:

Birmingham, AL ..... 888.313.6262  
 Montgomery, AL ..... 800.955.8321  
 Pikeville, KY ..... 888.703.8171  
 Cincinnati, OH ..... 888.280.7254

Columbus, OH ..... 800.231.1679  
 Dayton, OH ..... 800.387.7297  
 Akron/Canton, OH .. 800.888.0840  
 Pittsburgh, PA ..... 800.874.0591  
 St. Marys, PA ..... 800.874.0591

Carnegie, PA ..... 800.888.0840  
 Parkersburg, WV ..... 800.926.0174  
 Fairmont, WV ..... 800.872.0337  
 Wheeling, WV ..... 800.888.0840