

Level 1 Data Stream to Database



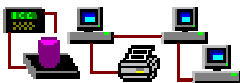
Level 1 is the simplest DataCollector solution. The DataCollector will read a data stream from a serial port and write it into an existing database or spreadsheet file. This system is also capable of producing tickets via a ticket definition file. The customer is responsible for providing the computer and database/spreadsheet software. The distributor will be responsible for configuring the DataCollector, and any ticket definition files required. The DataCollector can retrieve data from just about any device that is capable of RS232 serial output, and write that data to one of many supported database formats (Access, Excel, Lotus, Paradox, FoxPro, dBase, and others).

Level 2 Local Reports and Editing



Level 2 includes the DataCollector software of Level 1, with the addition of reporting and editing software. The distributor would configure the DataCollector software, an Access database, and create custom reports to meet the customer's needs. Included with the system are the following: A program for editing the data in the database; Report Viewer software (for viewing reports with customizable criteria); and Archiving software (for scheduled deletion and backup of records within the database).

Level 3 Networked with Web Reporting



Level 3 includes all of Level 2, with the addition of Web Enabled Reporting capabilities. This feature allows anyone on the customer's network to view and print reports through their web browser software. The system would ship with Info Viewer (which creates HTML files), the Export extender for the Report Viewer (which allows exporting transactions and creation of HTML files).

System Requirements



Minimum:

Windows 95
 Pentium 233 MHz
 64mb of RAM
 10x CD ROM Drive
 1.6 Gig Hard drive
 28.8 Modem (for remote support)

Recommended:

Windows 2000 Professional
 Pentium IV 2.8 GHz
 512mb of RAM
 48x CD ROM Drive
 40 Gig Hard drive
 56K Modem (for remote support)

Do you have someone in your company typing tickets or manifests into a spreadsheet or database program on a regular basis?

Did a device capable of RS232 output create these tickets or manifests?

If the answer to these questions is "Yes!" then you can save time and money by having the DataCollector input the data for you!

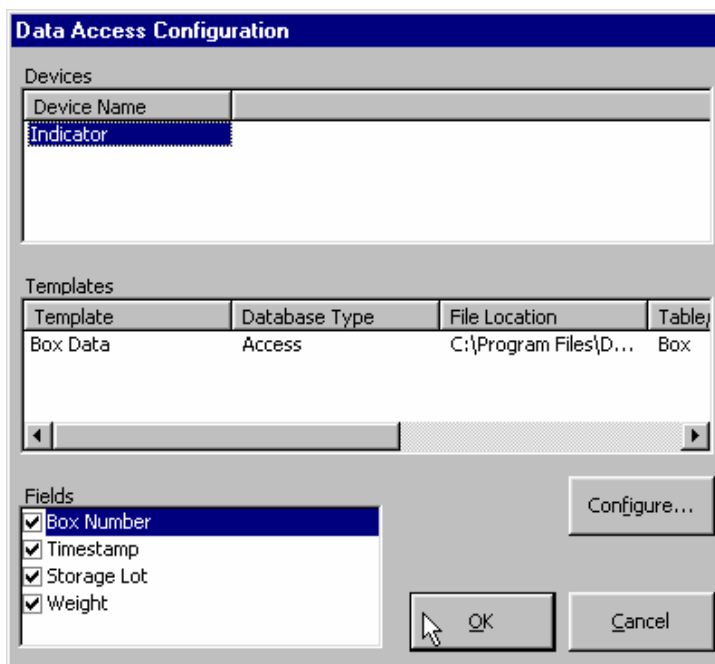
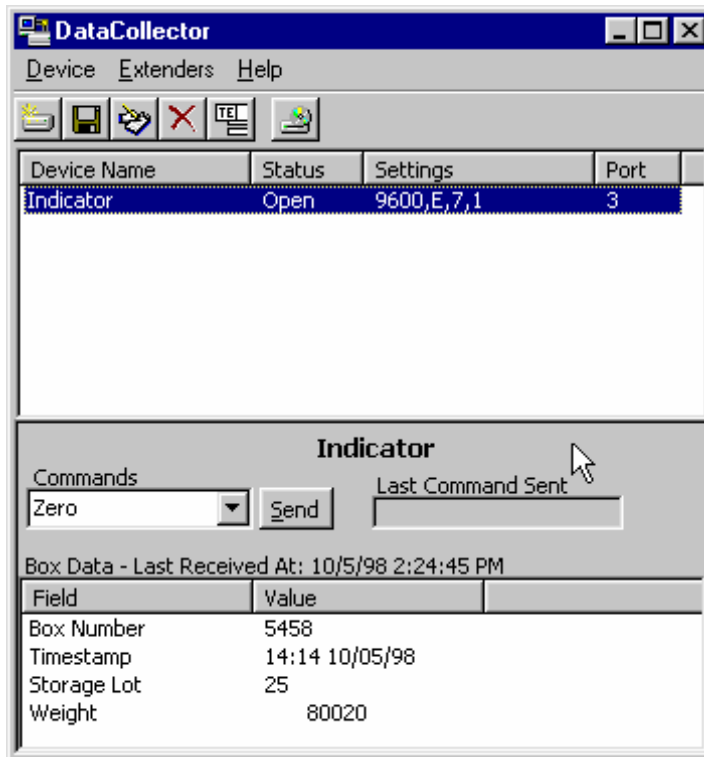
The DataCollector Level 1 can retrieve data from just about any device (or devices) capable of RS232 serial output.

Gather the data output from your instruments into your database or spreadsheet program to be used for important calculations or reporting.

Take advantage of the following features:

- Read data from a serial port in positional or delimited (separated by commas, tabs, carriage returns, linefeeds, etc.) format.
- Gather data from multiple devices. Log data coming from your floor scale, while at the same time logging data from your counting scale.
- Print tickets the way you want them to look using our customizable ticket definition files.
- Store the data into one of many supported database formats (Access, Excel, Lotus, Paradox, FoxPro, dBase, and others).

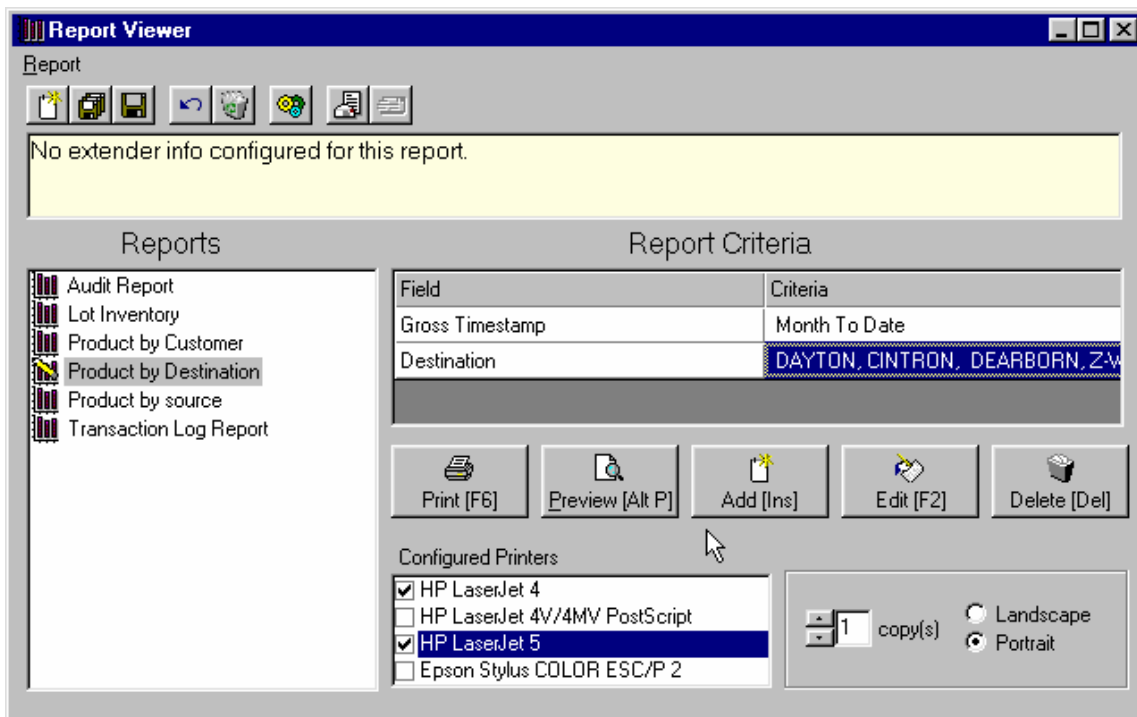
Start tracking important information more efficiently today by ordering your copy of the DataCollector Level 1!



DataCollector Level 1

Do you have a computer system that tracks production and shipment of your product?
 If so, are you satisfied with the reports you are receiving from your computer system?

If you answered “No” to either of these questions, then you need the DataCollector Level 2!



In addition to the data collection software of the Level 1 DataCollector, Level 2 adds report creation and viewing capabilities, as well as the ability to manually add and edit data within the database.

When you purchase a Level 2 DataCollector, our authorized distributors will:

- Configure an Access database to hold the data collected from your devices.
- Configure the DataCollector software to log data from your devices into the database.
- Create report definition files for your system using the de facto industry standard Crystal Reports
- Setup your system to allow the addition, deletion, and editing of data within your database.
- Schedule reports to run at certain times of the day. No more waiting until noon to see yesterday’s daily reports. Now they can be waiting on the printer when you get to work!

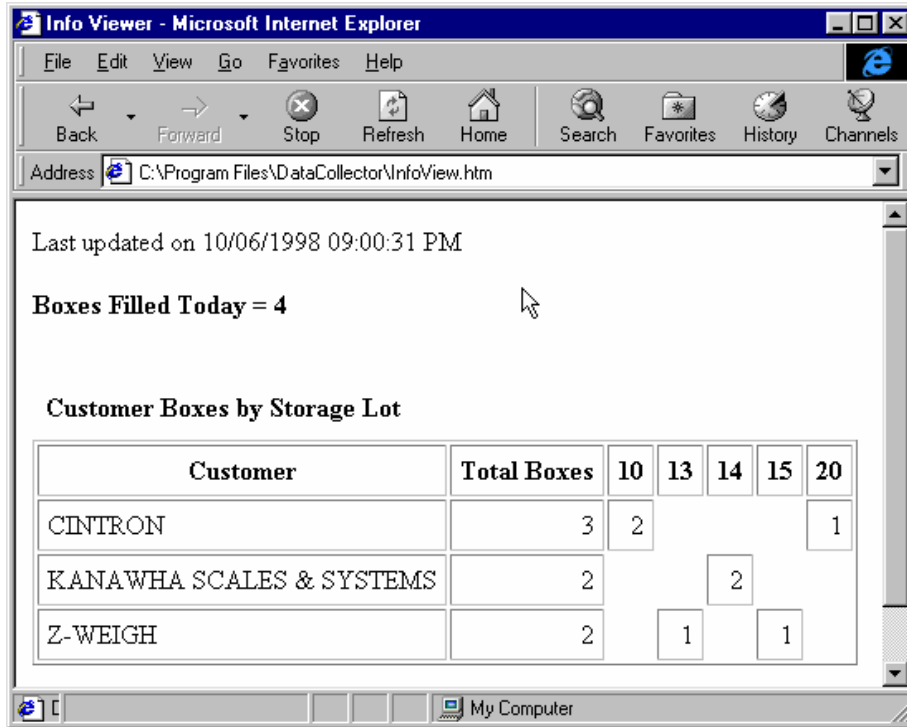
You can use our powerful Report Viewer to:

- Easily view reports without interrupting the data collection process.
- Print multiple copies of a report to multiple printers with one click of a button.
- Create your own custom reports (such as daily, weekly, and monthly reports) so that you can quickly access the data that you need to see.

Start seeing the reports you want by ordering a DataCollector Level 2 system today!

Wouldn't it be nice to see up to the minute production information?
 What if you could access that information from the computer on your desk?

If you have a computer network in your office, you can have all this and more NOW with the DataCollector Level 3!



The Level 3 DataCollector contains all the functionality of Level 1 and Level 2 in addition to these great network features:

- See up to the minute information through your Internet browser, at your desk! (Such as: production today, product by storage area, product by destination, etc.)
- E-mail reports to one or more people. (Can also be scheduled)
- Print reports on networked printers. (Can also be scheduled)
- Export data files to a variety of common database, spreadsheet, and HTML formats (Can also be scheduled).

When you purchase a Level 3 DataCollector, our authorized distributors will:

- Configure an Access database to hold the data collected from your devices, as well as setting up your system with all of the Level 2 features.
- Setup the system to create browser viewable files containing up to the minute data that you need to see from your desk.
- Setup and schedule reports to create browser viewable files that you can view from your desk (Shift production reports, daily, weekly, monthly shipping reports, etc).

Start making your data work for you by ordering a Level 3 DataCollector today!